

■ SMALL-SIZE GRAVE SYMBOLS



shop.strassacker.com


STRASSACKER

SMALL-SIZE GRAVE SYMBOLS

»Quo Vadis?« – the development of cemeteries is changing, structures are breaking up.



The concept: small-size grave symbols with fundamental ritual elements like flower vase and votive lamp that are so important to mourners, as well as the opportunity to design the site individually with name, dates, personal texts and symbols.

In view of a funeral culture that finds itself in a state of upheaval, the fundamental »change in the needs of mourners« is becoming ever more obvious. These needs must be profoundly re-evaluated in regard of designing gravesites.

What is traditional or conventional is being questioned, and new answers sought. Cemetery operators and the trades are trying to come up with solutions oriented toward social developments.

Anonymous fields and columbaria were the first attempts at meeting the desire for a solution that requires no care, but which caused many practical problems, both for mourners and for the cemetery operators. Even the further developments that came into preferred use in recent years, such as collective urn graves, as a rule a common field with a central name stela and urns distributed in a decentralised fashion. This form of gravesite, like lawn plaques and tree graves, increasingly point out that significant factors important to coping with grief are not being given adequate consideration and thus give rise to the same problems for mourners and cemetery operators. Central name stelae, small console stones, or flat plaques are being used more and more frequently. Since this type of grave marker, whose shape and size are often prescribed, make an individual design difficult owing to the properties of the material, resort is often made to the simplest solution, unfortunately.

The problem:

Simple solutions following the motto »square, practical, inexpensive«!



These lack essential elements which, according to current findings of bereavement research, are of decisive importance to living through and coping with the bereavement process. Anyone who does an in-depth study of the true needs of many mourners in regard to the design of cemeteries and gravesites, however, and the underlying principles of the therapeutic effect of visiting the gravesite and cemetery, will come up with design solutions to turn cemeteries into places that give strength.

SMALL-SIZE GRAVE SYMBOLS



Among the most important elements are the specifically marked, individual burial site, combined with the ability to do something at the gravesite, which suits one's needs and wishes (caring for the grave, lighting candles, placing flowers, etc.). At the same time, gravesites must provide an opportunity to be relieved of the obligation of caring for a grave in perpetuity (for example, areas cared for in common by cemetery gardeners). Many of the concepts installed in the recent past show that little space was left for a headstone. Yet this element is the primary memorial marker giving mourners an orientation and is thus of key importance

Finding a creative solution to counter this predicament affecting many stonemasons was a challenge to our company.

How could it be possible to create a well-designed grave marker even on small-size gravesites?

One possible solution:

Our claim is to develop formally different grave markers that define the space according to the size of the area assigned for the grave, and which enable a personal, individual design in high quality despite the small space. A wide variety of individual grave markers can enable us to counter the current trend toward often monotonous burial sites with creativity and sympathetic individuality.

We would like to present our ideas with the sample designs shown here. They illustrate our solutions and are intended to inspire further creative ideas on this theme. We would also like to discuss and advance this process with our stonemason customers.

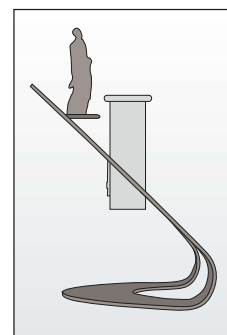


Creative small-size grave symbols with individually designed plaques, connected letters, symbols and ritual elements for the bereaved

SMALL-SIZE GRAVE SYMBOLS

Small-size grave symbol with broken-through letters and integrated vase and votive lamp

- Individual design with inscription according to customer specification
- Lettering design with common computer fonts
- The size of the letters results from the length of the text. In individual cases, the text will be checked for realisability.
- Item in bronze is available in all standard and special patinas
- Price upon request



Side view

B ♀

No. 85446

»Band of connectedness«
with individual, broken-through letters
incl. vase and votive lamp in stainless steel
39x58x23 cm

Fig.: bronze, »Special patina«

Band of Connectedness

When parting and loss separate people, dissolve fellowships, never again allowing them to come back together, then the band of connectedness remains the bonding power of love. The name stands solely for the connection between the »here« of the bereaved who must stay behind, and the »there« of the already departed.



SMALL-SIZE GRAVE SYMBOLS

Small-size grave symbol with broken-through letters and integrated vase and votive lamp

- Individual design with inscription according to customer specification
- Lettering design with common computer fonts
- The size of the letters results from the length of the text.
In individual cases, the text will be checked for realisability.
- Item in bronze is available in all standard and special patinas
- Item in stainless steel: surface polished or sandblasted
- Price upon request



B ♀

No. 60264

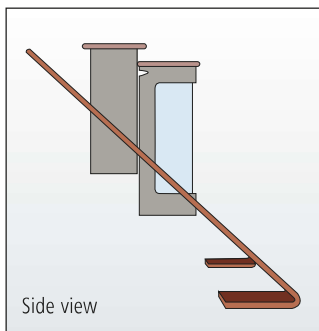
»Arch«

with individual, broken-through letters
incl. vase and votive lamp in stainless steel
25x58x20 cm

Fig.: bronze, patina »Light Brown«



SMALL-SIZE GRAVE SYMBOLS



S ♀

No. 60265

»Arch«
with individual, broken-through letters
incl. vase and votive lamp in stainless steel
25x58x20 cm
Fig: stainless steel, surface sandblasted



B ♀

No. 60261

»Arch«, with individual, broken-through letters
22x58x20 cm
Fig.: bronze, patina »Light Brown«



S ♀

No. 60259

»Arch«, with individual, broken-through letters
22x58x20 cm
Fig: stainless steel, surface sandblasted

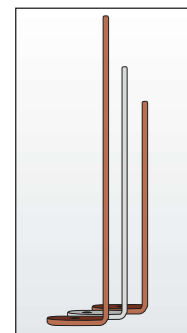


SMALL-SIZE GRAVE SYMBOLS

Multi-piece, small-size grave symbol with broken-through letters

- Diverse combination possibilities
- Ideal for second lettering
- Lettering design with common computer fonts
- The size of the letters results from the length of the text. In individual cases, the text will be checked for realisability.

- Item in bronze is available in all standard and special patinas
- Price upon request



Side view



Design example

No. 60267 »Rainbow«, two-part with

No. 60268 »Rainbow«, for second lettering



Rainbow

The fascination that takes hold of us when we see a rainbow always causes us to ask where is the beginning, and where is the end. As children, we looked for these points in the world of reality. Today we know that they are not to be found in this world.

The questions »Where do we come from?«, »Where are we going?« are hard for us humans to answer. When we look at a rainbow, therefore, we feel that it arises from the deepest centre of being, and returns there again. We are people of the rainbow – brothers and sisters.

SMALL-SIZE GRAVE SYMBOLS

B S ♀

No. 60267

»Rainbow«, two-part with individual, broken-through letters
33x66x5 cm

Fig.: bronze, patina »Light Brown«/stainless steel, surface sandblasted



B ♀

No. 60268

»Rainbow«, for second lettering with individual, broken-through letters
23x46x5 cm

Fig.: bronze, patina »Light Brown«



B S ♀

No. 60269

»Rainbow«, two-part with individual, broken-through letters
33x66x5 cm

Fig: stainless steel, surface sandblasted/bronze, patina »Light Brown«



S ♀

No. 60271

»Rainbow«, for second lettering with individual, broken-through letters
23x46x5 cm

Fig: stainless steel, surface sandblasted



NEU/NEW
2018
NOUVEAU

B S ♀

No. 62594

»Rainbow«, two-part with individual, broken-through letters
Big arch: 14x28x4 cm, small arch: 10x20x4 cm

Fig.: bronze, patina »Light Brown«/stainless steel, surface sandblasted



NEU/NEW
2018
NOUVEAU

B S ♀

No. 62595

»Rainbow«, two-part with individual, broken-through letters
Big arch: 14x28x4 cm, small arch: 10x20x4 cm

Fig.: bronze, patina »Light Brown«/stainless steel, surface sandblasted



Design: Moser, Heidenheim



SMALL-SIZE GRAVE SYMBOLS

Small-size grave symbol with broken-through letters and integrated vase

- Individual design with inscription according to customer specification
- Lettering design with common computer fonts
- The size of the letters results from the length of the text.
In individual cases, the text will be checked for realisability.
- Item in bronze is available in all standard and special patinas

B ♀

No. 31122

»Bridge with vase«
with broken-through letters
incl. vase in stainless steel with glass inlay
13x88x12 cm

Fig.: bronze, patina »Brown«



Bridge of life

Having to experience the »here« in the »there«. The soul is cast adrift in the wild, seething waters of the most tempestuous emotions. Like a bridge, the band of remembrance bears us safely across these times.



SMALL-SIZE GRAVE SYMBOLS

Small-size grave symbol with broken-through letters and integrated vase

- Individual design with inscription according to customer specification
- Lettering design with common computer fonts
- The size of the letters results from the length of the text.
In individual cases, the text will be checked for realisability.
- Item in stainless steel, surface polished or sandblasted

S 9

No. 31123

»Bridge with vase«
with broken-through letters
incl. vase in stainless steel with glass inlay
13 x 88 x 12 cm

Fig: stainless steel, surface sandblasted



SMALL-SIZE GRAVE SYMBOLS

Creative small-size plaque designs in leaf form for small-size graves.

Individual text can be used as desired. Available in all common computer fonts. The size of the letters is determined by the length of the text and in individual cases will be checked for feasibility. Available in all standard and special patinas.



2.
»Leaf with individual lettering«
23x38x7 cm
Fig.: bronze, »Special patina«



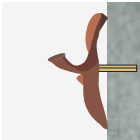
1.
»Leaf with individual lettering«
28x47x9 cm
Fig.: bronze, »Special patina«



3.
»Leaf with individual lettering«
13x22x3 cm
Fig.: bronze, »Special patina«

Mounting and ordering overview

Mounting
»surface mounted«



1.

B ♂
No. 20814

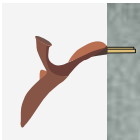
2.

B ♂
No. 20813

3.

B ♂
No. 20829

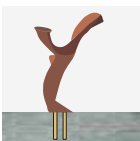
Mounting
»floating«



B ♂
No. 20749

B ♂
No. 20828

Mounting
»free-standing«



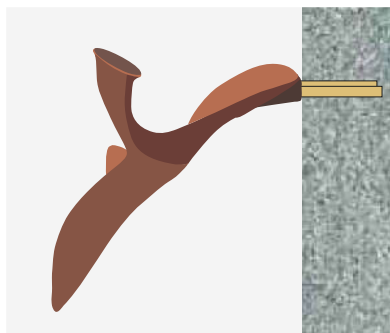
B ♀
No. 20838

B ♀
No. 20839

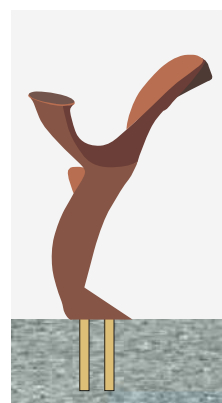
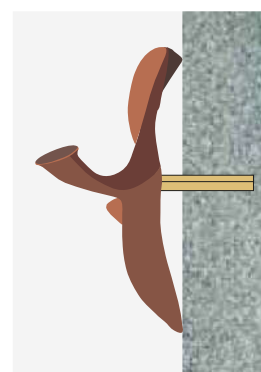
B ♀
No. 20843

SMALL-SIZE GRAVE SYMBOLS

Mounting »floating«



Mounting
»surface
mounted«



Mounting
»free-standing«

SMALL-SIZE GRAVE SYMBOLS



B U

No. 31667

Plaque, Design »Butterfly«
with 1,4 mm raised font
15x20x2 cm

Fig.: bronze, patina »Brown«

NEU/NEW
2018
NOUVEAU



B ♀

No. 31656

»Tree« inscription tablet
with individual font
60x26x8 cm

Fig.: bronze,
»Special patina«



B U

No. 31659

Grave symbol, design »bird«
with individual lettering
Dimensions bottom plate:
29x30x0,5 cm
Dimensions with overlap:
29x37x10 cm
letters raised (1,4 mm),
Plaque lightly modellated
Fig.: bronze, patina »Ash«



SMALL-SIZE GRAVE SYMBOLS



B U

No. 31655

Plaque, design »Twig«
with individual letters
28 cm ø, 5 cm thick
superimposed design, letters raised (1,4 mm)
Fig.: bronze, »Special patina«



B U

No. 31653

Plaque, design »Wave«
with individual letters
27 cm ø, 2 cm thick
superimposed design,
with broken-through lettering
Fig.: bronze, »Special patina«

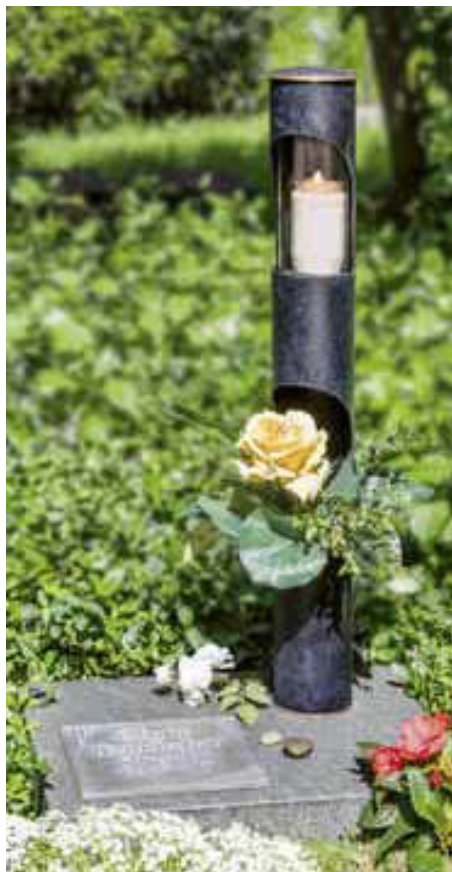


SMALL-SIZE GRAVE SYMBOLS

Ritual column with integrated votive lamp and flower vase



Ritual column No. 40225 in combination with a plaque or connected letters and symbols



Design example: ritual column with plaque, letters raised (1,4 mm) — see chapter plaques, page 115



Design example: ritual column with connected letters No. 71047 »Helga Block« and symbols, stainless steel, surface polished

Patina variations for brass



»Lost wax patina«

Patina »Messina«

Patina »Dark«



No. 40225
Ritual column
71 cm h, 10 cm ø
Fig.: bronze/brass, patina »Messina«

SMALL-SIZE GRAVE SYMBOLS

Design example 2

Please specify on order form



No. 40226

Ritual column with plaque
letters raised (1,4 mm)

71 cm h, 27 cm ø

Fig.: bronze/brass, »Lost wax patina«

(Please note: Delivery standard patina »Messina«)

Design example 4

Please specify on order form



No. 40226

Ritual column with plaque
letters raised (1,4 mm)

71 cm h, 27 cm ø

Fig.: bronze/brass, patina »Messina«

SMALL-SIZE GRAVE SYMBOLS

Design example 6

Please specify on order form



No. 40226

Ritual column with plaque
letters raised (1,4 mm)
71 cm h, 27 cm ø

Fig.: bronze/brass,
patina »Messina«



Design example with
additional name plaques



Design example 5

Please specify on order form